



# KALINGA UNIVERSITY

Established under Chhattisgarh Private Universities (Establishment and Operation) Act, 2005

Campus:- Kotni, Near Mantralaya, Naya Raipur, Chhattisgarh, INDIA - 492 101

Mob: 9303097043, website: [www.kalingauniversity.ac.in](http://www.kalingauniversity.ac.in)

---

## Waste Management

To ensure a clean, sustainable, and environmentally responsible campus, Kalinga University follows a systematic approach towards waste management. The University manages different types of waste, such as solid, liquid, electronic, and biomedical waste, promoting recycling practices among students and staff members. These efforts align with the United Nations Sustainable Development Goals, specifically SDG 6 (Clean Water and Sanitation), SDG 11 (Sustainable Cities and Communities), SDG 12 (Responsible Consumption and Production), and SDG 13 (Climate Action).

**Our waste management practices include:**

## A. Solid Waste Management

The University has established a well-structured, solid waste management system by partnering with authorized vendors who regularly collect garbage and paper waste from various collection points. These are strategically located with proper colour coding, like green for biodegradable waste, blue for recyclable waste, and yellow for other waste categories, ensuring systematic segregation of wastes. We strongly encourage everyone on the campus to use minimal plastic and promote the usage of eco-friendly products, such as paper cups and paper bags, to maintain a plastic-free campus environment.

To manage biodegradable waste, the University has established compost pits and vermicomposting units across the campus. Green waste generated from gardens and landscape areas, such as dry leaves, pruning residues, grass clippings, and other horticulture waste, is collected and processed through vermicomposting. In this process, organic waste is decomposed by earthworms and convert it into nutrient-rich vermin-compost. This method speeds up the decomposition process and improves the quality of organic manure. Wet waste collected from the cafeteria and canteen is also combined with suitable horticulture waste and treated in composting and vermicomposting units to produce high-quality organic fertilizer. The compost produced from these processes is used to maintain the campus greenery, plantations, and gardens, supporting an eco-friendly and circular approach towards waste management.





## **B. Liquid Waste Management**

- To ensure 100% utilization of liquid waste within the campus, the University operates a Sewage Treatment Plant (STP) to treat wastewater for gardening and landscaping purposes.
- Grey water collected from wash basins and hostel rooms is collected in storage tanks and used for irrigation purposes.

- Low-flush cisterns and water-saving taps with controlled flow systems are installed in washrooms.
- To support water conservation, the campus has rainwater harvesting tanks with sufficient storage capacity.
- Plantation drives conducted under the National Mission on Clean and Green Environment are monitored annually by NSS.

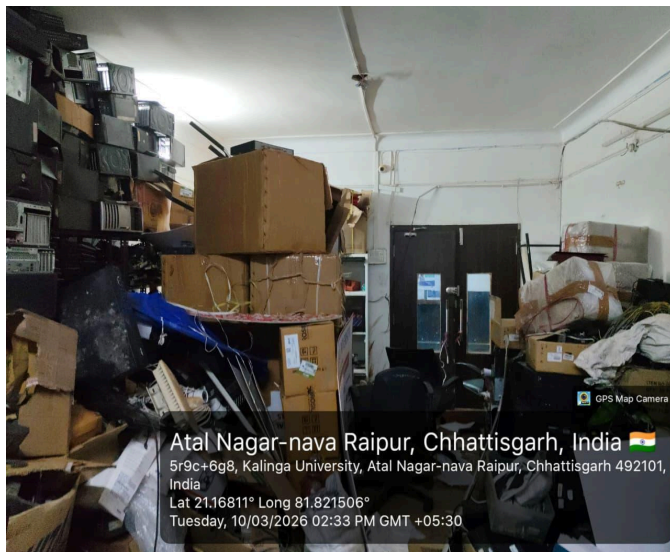
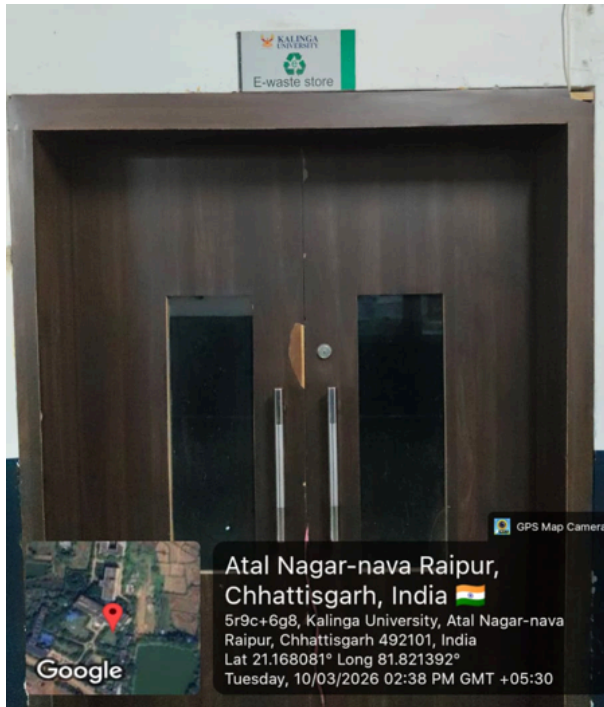
## C. E-Waste Management

The University follows a Standard Operating Procedure (SOP) for the safe handling and disposal of hazardous laboratory and electronic waste to ensure they are handled carefully in a legally compliant manner.

Departments are strictly instructed to submit outdated or non-functional electronic devices, such as monitors, keyboards, printers, batteries, cables, and other laboratory equipment to the E-Waste Store. By following all safety norms, these items are further segregated according to their categories and kept for temporary storage and monitoring before final disposal.

To ensure the responsible disposal of waste, the University has signed MoUs with certified and authorized e-waste management vendors. The collected e-waste is periodically handed over to these authorized recyclers for scientific dismantling, recycling, and recovery of reusable materials. This prevents environmental and health hazards caused by toxic components such as mercury, lead, cadmium, and other harmful substances present in electronic devices.





## D. Waste Recycling System

The faculty, staff, and students actively participate in the recycling initiatives, such as the segregation of recyclable and non-recyclable waste materials and depositing them carefully in different labeled bins. Continuous awareness programs are conducted to encourage active participation in recycling activities across the campus.





## **E. Biomedical Waste Management**

Biomedical waste generated from the University's animal house and medical room is segregated at the point of origin to ensure safe handling and proper disposal. The waste is placed in colour-coded and labeled containers under different categories, such as infectious waste, sharps, and non-infectious materials. It prevents cross-contamination and ensures compliance with biomedical waste management regulations. The process is monitored every day by trained personnel to maintain strict hygiene standards. The collected waste is transported by authorized agencies for further treatment.



## F. Waste Management Details

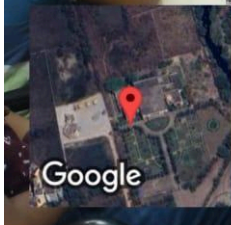
Financial Year	Total (Wet + Dry) Solid Waste Generated (Plant Waste not included)	Total Horticulture Waste Generated (Plant Waste)	Total Dry Waste Generated (Plant Waste not included)	Total Wet Waste Generated (Plant Waste not included)	Total Dry Waste Recycled	Total Biodegradable (Food) Waste Processed (excluding plant/tree waste)	Total Electronic Waste Generated
Unit	Tons	Tons	Tons	Tons	Tons	Tons	KG
2024-25	11.09279021	0.440925	0.17637	0.099208	0.0661387	0.49604	2024
2023-24	13.28683064	0.418878	0.154324	0.0881849	0.0606271	0.462971	8790
2022-23	6.78451668	0.396832	0.132277	0.0881849	0.049604	0.429901	5176

## G.Waste Management Programs Held at Kalinga University

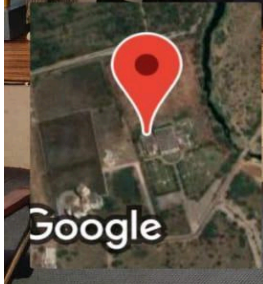
Kalinga University conducts various waste management awareness programs, workshops, and seminars in collaboration with environmental organizations and local authorities. These initiatives encourage everyone on the campus to adopt sustainable practices such as recycling, composting, and waste segregation.

### Some of the programs include:

- Three-Day National Seminar on “Waste Management and Sustainable Practices” (management innovations, sustainability, climate impact, and environmental ethics) sponsored by AICTE ATAL VAANI
- Training Program on ‘Waste Optimization’ by Green Skill Development Program, Government of India
- Workshop on ‘Best out of Waste’ at Regional Science Centre, Raipur, Chhattisgarh
- Industrial Visit on Sewage Treatment Plant, Water Purification Plant & Solid Waste Management Plant, Raipur



Raipur, Chhattisgarh, India  
7MGJ+PW, Raipur, Chhattisgarh 492014, India  
Lat 21.276914°  
Long 81.682142°  
06/06/24 10:27 AM GMT +05:30



Raipur, Chhattisgarh, India  
7MGJ+PW, Raipur, Chhattisgarh 492014, India  
Lat 21.277085°  
Long 81.682054°  
12/05/23 04:52 PM GMT +05:30





**KALINGA UNIVERSITY**

[www.kalingauniversity.ac.in](http://www.kalingauniversity.ac.in)

**Faculty of Science  
&  
ATAL VAANI**

Jointly Organise

**3-Day Seminar On**

**NATIONAL SEMINAR ON  
WASTE MANAGEMENT AND  
SUSTAINABLE PRACTICES**

**03<sup>rd</sup>-05<sup>th</sup> September 2025**



Kalinga University Campus, Naya Raipur, Chhattisgarh.

